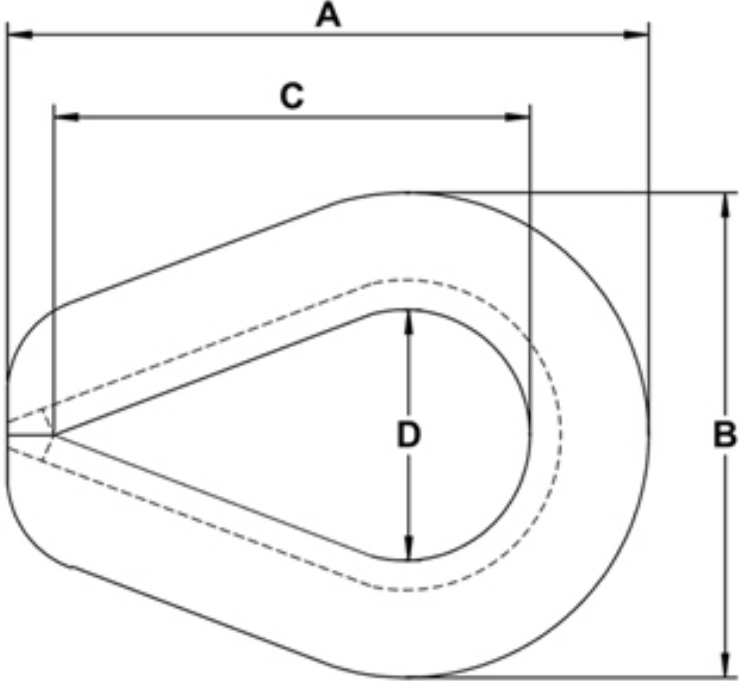


Dimensional Data	
Product	316 Stainless Steel Standard Cable Thimble



Dimensions are for Reference Only				
Size	Outside Length (A)	Outside Width (B)	Inside Length (C)	Inside Width (D)
1/8"	1.80"	1.00"	1.50"	0.71"
3/16"	1.83"	1.04"	1.30"	0.71"
1/4"	1.83"	1.07"	1.50"	0.71"
3/8"	2.34"	1.34"	1.80"	0.95"
1/2"	2.57"	1.65"	2.00"	1.10"